

Crosscurrents

Contemporary Painting from Panama, 1968-1998



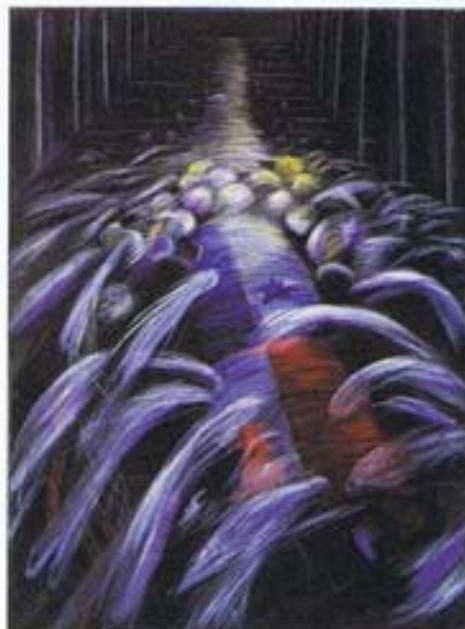
B A S S
Museum of Art

2121 Park Avenue • Miami Beach, FL 33139

September 10 - November 1 1998

Coqui Calderón

Born in Panama in 1937. She studied at Rosemont College in Pennsylvania, where she received a Bachelor of Arts degree in 1959, and later went on to specialize in painting at La Grande Chaumière and the Académie Julien in Paris. Calderon has spent long periods of time in Paris, New York, and Miami, but has lived in Panama since 1993.

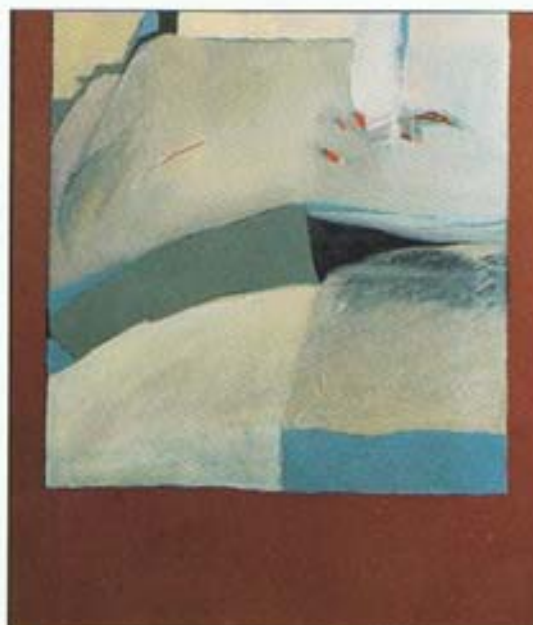


Muerte en la Catedral
(Death in the Cathedral-from Panama Series), 1988.

Acrylic on canvas, 60" x 46" (152.4 x 116.8 cm). Collection of the artist.

Antonio Alvarado

Born in Le Havre, France, in 1938 he worked in the studio of painter Alberto Dutary. Influenced by Abstract Expressionism in his early work, Alvarado would pursue abstraction throughout his career.



Retomando las huellas de Buda
(Retracting Buddha's footsteps), 1985.

Acrylic on Canvas, 50" x 40"
(127 x 101.6 cm).
Collection of Rafael Bárcenas.

This exhibition focuses on painting, the principal means of aesthetic expression in Panama during the last three decades. The year 1968 was one of great social, political, and aesthetic changes on the international front and in the case of Panama, it marked the beginning of a military dictatorship that lasted until the return of democracy in 1989. In the arts, the 1960s were characterized by Panamanian painters' engagement with international abstract languages, and the 1970s and 80s brought new directions on the part of the country's artists from established masters to younger painters. Some of the artists have worked within a fantastical form of Realism, while others have sought more gesturally expressive modes. The problems faced by Panamanian society, including economic and political crises, as well as the changing role of government and religion, have been confronted in paintings as have ecological concerns, including jungle deforestation, the disappearance of wildlife and the encroachment of urban sprawl. The country's indigenous heritage and folk traditions lie just below the surface of many of the paintings and it becomes clear that the appropriation and transformation of traditional subjects and forms plays a key role in Panamanian art.

Monica E. Kupfer

B A S S Museum of Art

Organized by the Americas Society Art Gallery in association
with the Museo de Arte Contemporáneo de Panamá.

Curated by Monica E. Kupfer and Edward J. Sullivan.

An exhibition sponsored through generous contributions from
private companies, banks and patrons of the arts in Panama.

Cover:

Alfredo Siclair

Born in Panama in 1915. In 1947 he traveled to Buenos Aires, where he studied at the Escuela Superior de Bellas Artes Ernesto de La Cárcova. He held his first show in 1950 and lives and works in Panama City, Panama.